



THE ESTATE COMPANY

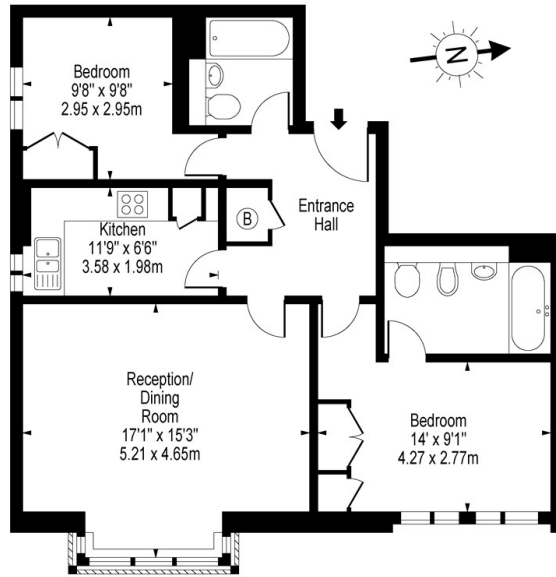


Marlborough Hill, St Johns Wood, NW8 0NG

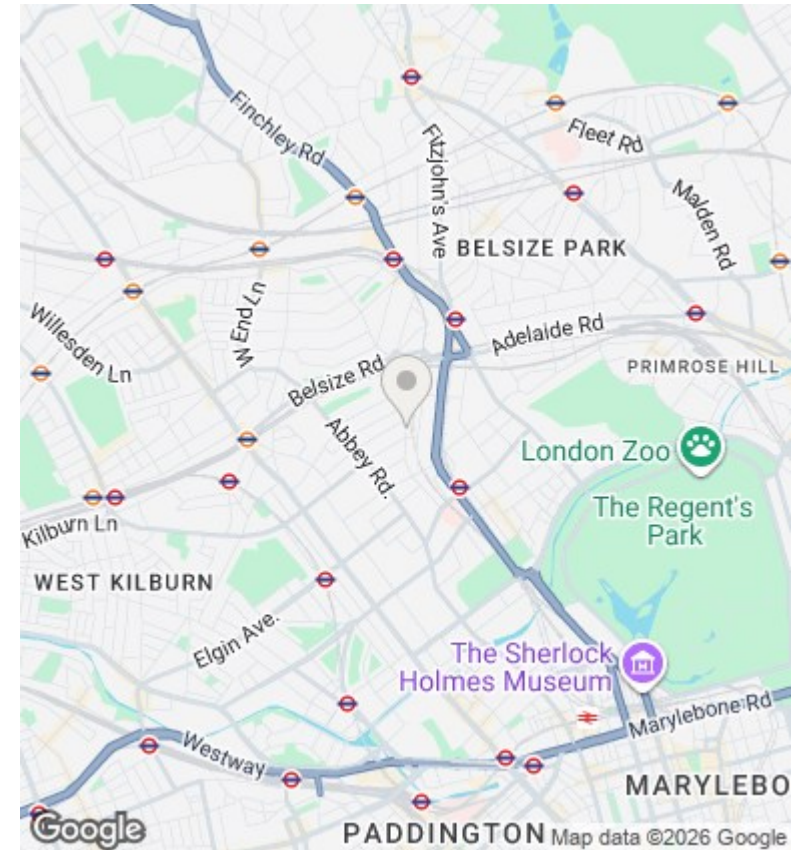
£3,100 PCM

- 2 Double Bedrooms
- 2 Bathrooms
- Secure Underground Parking
- First Floor with Elevator
- 788 sq ft
- Furnished/Unfurnished

**Marlborough Hill,
St. Johns Wood, NW8**



First Floor
 Approx Gross Internal Area **788 Sq Ft - 73.20 Sq M**
 For Illustration Purposes Only - Not To Scale
 www.goldlens.co.uk
 Ref. No. 004014M



Directions

Viewings

Viewings by arrangement only. Call 020 7372 5000 to make an appointment.

Council Tax Band

B

EPC Rating:

C

Energy Efficiency Rating		Current	Potential
<i>Very energy efficient - lower running costs</i>			
(92 plus) A			
(81-91) B			81
(69-80) C		71	
(55-68) D			
(39-54) E			
(21-38) F			
(1-20) G			
<i>Not energy efficient - higher running costs</i>			
England & Wales		EU Directive 2002/91/EC	